

PERIMETER

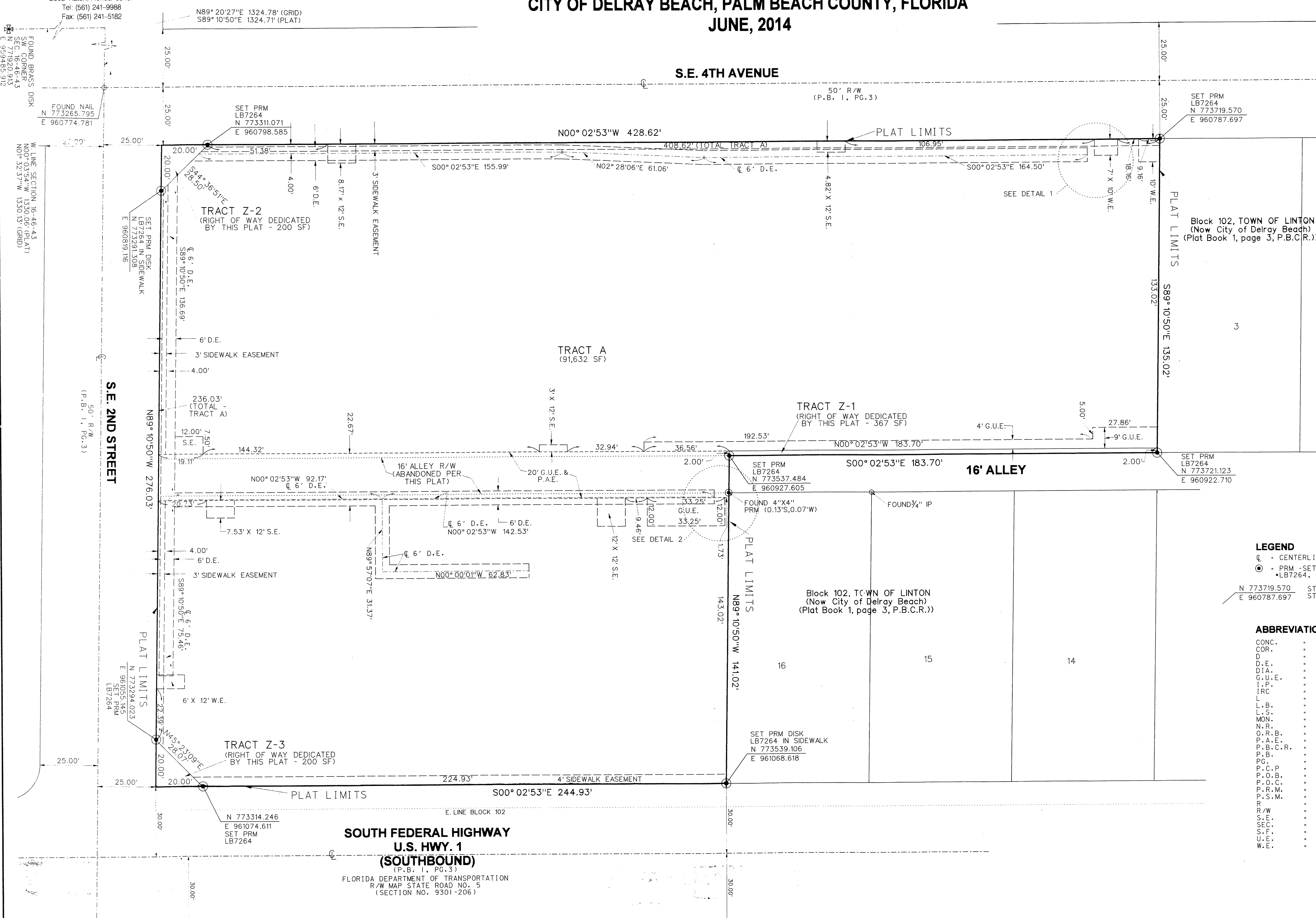
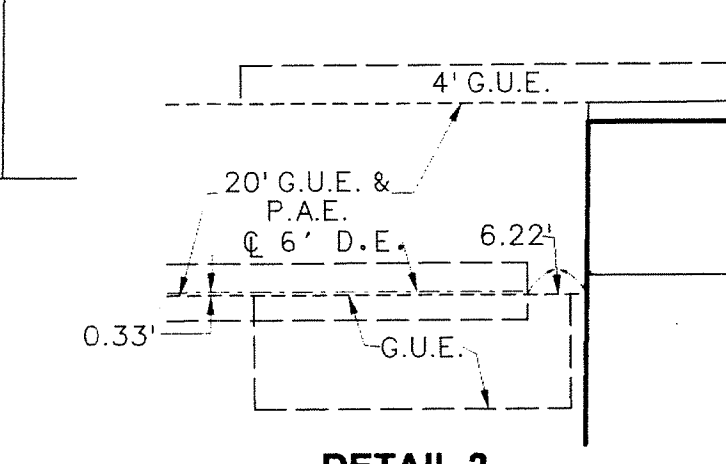
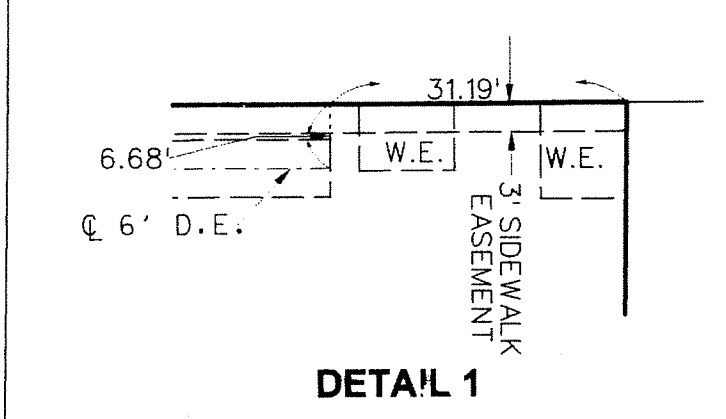
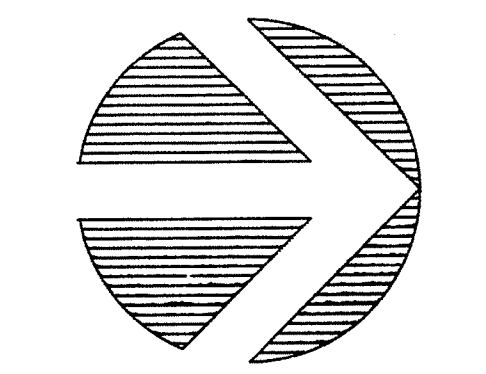
SURVEYING & MAPPING
 Prepared by: Jeff S. Hodapp, P.S.M.
 Certificate of Authorization No. LB7264
 949A Clint Moore Road
 Boca Raton, Florida 33487
 Tel: (561) 241-9988
 Fax: (561) 241-5182

UPTOWN DELRAY

A REPLAT OF ALL OF LOTS 4-10 AND A PORTION OF LOTS 17-20, ALL OF BLOCK 102 TOGETHER WITH A PORTION OF THE ADJACENT 16.00' ALLEY ALL OF "MAP OF THE TOWN OF LINTON" (P.B.1, PG. 3, P.B.C.R.), SECTION 16, TOWNSHIP 46 SOUTH, RANGE 43 EAST CITY OF DELRAY BEACH, PALM BEACH COUNTY, FLORIDA
JUNE, 2014

176

SHEET 2 OF 2



- LEGEND**
- ⊙ - CENTERLINE
 - ⊙ - PRM - SET PERMANENT REFERENCE MONUMENT
 - LB7264, UNLESS NOTED OTHERWISE
- N 773719.570 STATE PLANE COORDINATE - NORTHING
 E 960787.697 STATE PLANE COORDINATE - EASTING

- ABBREVIATIONS:**
- CONC. - CONCRETE
 - COR. - CORNER
 - D - DELTA (CENTRAL ANGLE)
 - D.E. - DRAINAGE EASEMENT
 - DIA. - DIAMETER
 - G.U.E. - GENERAL UTILITY EASEMENT
 - I.P. - IRON PIPE
 - IRC - IRON ROD & CAP
 - L - ARC LENGTH
 - L.B. - LICENSED BUSINESS
 - L.S. - LICENSED SURVEYOR
 - MON. - MONUMENT
 - N.R. - NON-RADIAL
 - O.R.B. - OFFICIAL RECORDS BOOK
 - P.A.E. - PUBLIC ACCESS EASEMENT
 - P.B.C.R. - PALM BEACH COUNTY RECORDS
 - P.B. - PLAT BOOK
 - P.G. - PAGE
 - P.C.P. - PERMANENT CONTROL POINT
 - P.O.B. - POINT OF BEGINNING
 - P.O.C. - POINT OF COMMENCEMENT
 - P.R.M. - PERMANENT REFERENCE MONUMENT
 - P.S.M. - PROFESSIONAL SURVEYOR & MAPPER
 - R - RADIUS
 - R/W - RIGHT-OF-WAY
 - S.E. - SEWER EASEMENT
 - SEC. - SECTION
 - S.F. - SQUARE FEET
 - U.E. - UTILITY EASEMENT
 - W.E. - WATER EASEMENT

SOUTH FEDERAL HIGHWAY
U.S. HWY. 1
(SOUTHBOUND)
 (P.B. 1, PG. 3)
 FLORIDA DEPARTMENT OF TRANSPORTATION
 R/W MAP STATE ROAD NO. 5
 (SECTION NO. 9301-206)